



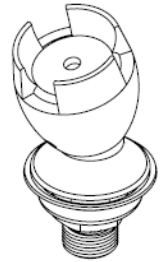
## Product Installation Guidelines

Version 3, 2 October 2023, Page 1 of 4

# Ezy-Drink® CP-BS Lead Safe™ Remote Drink Bubbler Mouthguard & Stem

## PRODUCT CODES:

- 170.11.40.00



## SPECIFICATIONS

- Bubbler Mouth Guard is designed to operate at full mains pressure.
- The rubber mouthguard is resistant to fungal and bacterial attack and has a high resistance to sunlight.
- Made from Lead Safe™ DR Brass\*

**IMPORTANT:** All Ezy-Drink® remote bubbler taps are tested in accordance with AS/NZS 3718 and leave our premises in good working order.

Our Lead Safe™ product range is compliant with the Lead-Free Requirements of the NCC 2022 Vol. Three, Clause A5G4(2) and NSF/ANSI 372.

**WARNINGS:** Special attention to be paid on notes, photos, images, or drawings of assembly steps marked with the warning symbol.



## TECHNICAL DATA

Inlet	G ½" - Male	
Outlet	Rubber mouthguard	
Headwork	N/A	
Working Pressure Range (kPa)	Min	50
	Max	500
Working Temperature Range (°C)	Min	5
	Max	60
Nominal Flow Rate (LPM)	N/A	
Finish	Chrome/Rubber	

**NOTE:** Galvin Engineering continually strive to improve their products. Specifications may change without notice.

## TOOLS REQUIRED

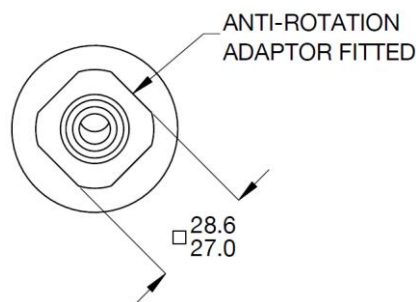
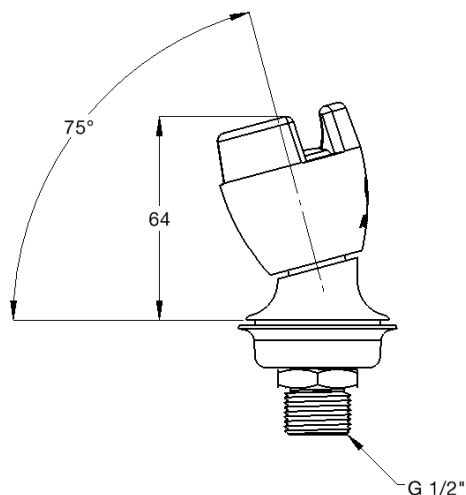
- Power drill
- Spanner or adjustable crescent
- Screwdriver

## PRE-INSTALLATION - MOUNTING DETAILS

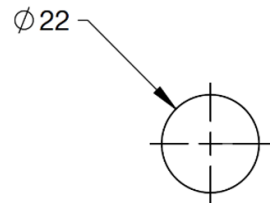
- If the mounting holes do not already exist, mark out and drill the holes in the bench/trough, as shown in rough-in dimensions.



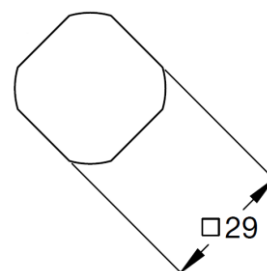
**Note:** Before installation, all lines must be flushed. We recommend that a line strainer be installed prior to drinking taps to eliminate any foreign material.



### Rough-In Dimensions



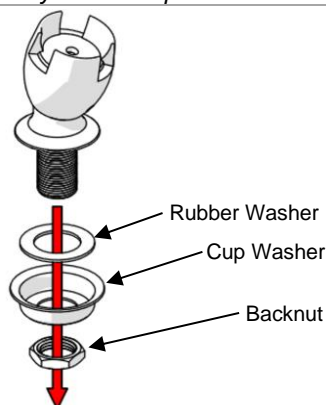
Without anti-rotation adaptor



With anti-rotation adaptor

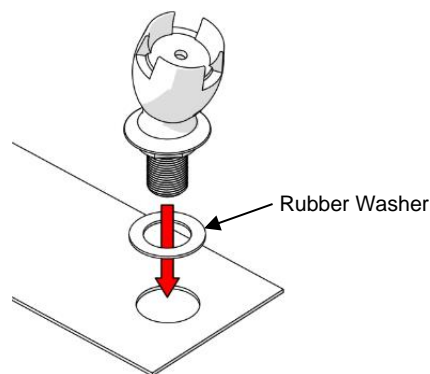
## INSTALLATION

**IMPORTANT:** Galvin Engineering products must be installed in accordance with these installation instructions and in accordance with AS/NZS 3500, the PCA and your local regulatory requirements. Water and/or electrical supply conditions must also comply to the applicable national and/or state standards. Failing to comply with these provisions shall void the product warranty and may affect the performance of the product.



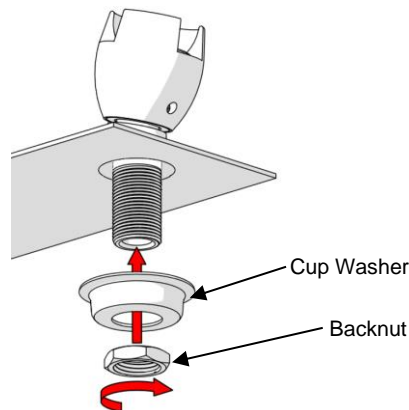
### 1. Disassemble Mouthguard Outlet

- Remove backnut and cup washer from the mouthguard outlet assembly.



### 2. Fit Mouthguard Outlet

- Ensure the sealing rubber washer is placed underneath the mouthguard outlet.
- Fit the mouthguard outlet into the trough.



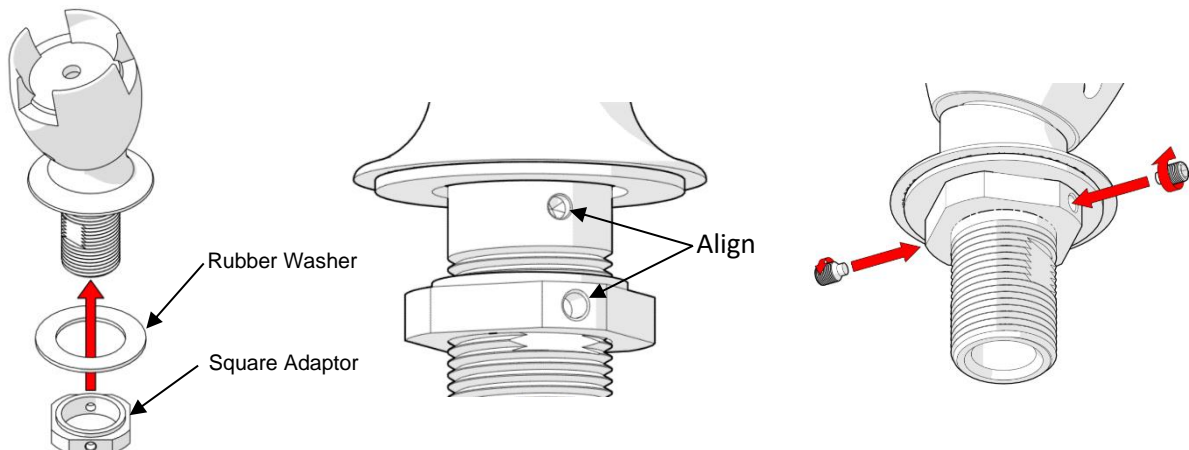
### 3. Secure Mouthguard Outlet

- Secure the mouthguard outlet underneath with the supplied cup washer and backnut.
- Use thread tape/sealant when connecting mains water.
- Once fitted, test for leaks and correct operation.

## USING SQUARE ADAPTOR



**IMPORTANT:** If anti-rotation is required, use the square adaptor included with the product as shown below. Ensure rough-in dimensions for square adaptor in PRE-INSTALLATION are followed for correct fitment.



- Fit rubber washer then fit square adaptor.
- Align threaded hole on adaptor and the holes on the bubbler outlet.
- Fit and tighten grub screws as shown to secure square adaptor.
- Follow steps 2 & 3 in INSTALLATION to continue installation ensuring rough-in dimensions for square adaptor are followed.

## TROUBLESHOOTING

PROBLEM	CAUSE	RECTIFICATION
Inconsistent flow	Blocked outlet	Remove outlet and clean
Water is not flowing from outlet	Water is turned off	Turn on water

## WARRANTY

Galvin Engineering products are covered under our Manufacturer's Warranty. Galvin Engineering products must be installed in accordance with the installation instructions and in accordance with AS 3500 and NCC Volume Three, relevant Australian Standards and local authorities applicable to product being installed. Water and electrical supply conditions must also comply to the applicable national and/or state standards, failing to comply with these provisions may void the product warranty and affect performance of the product.

Please visit [www.galvinengineering.com.au](http://www.galvinengineering.com.au) to view the full warranty, our Installation Compliance and Maintenance & Cleaning information as well as any other additional information.